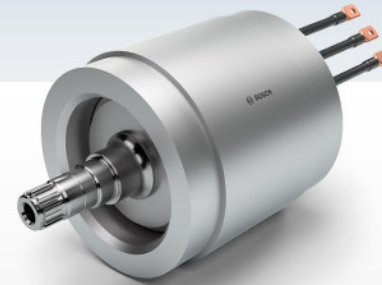


# Active parts of the electric motor 280

Compact and efficient electric drive for the electrification of commercial vehicles



Powerful electric drive with 20% better power-to-weight ratio



# 97%

efficiency of electric motor

## 240 kW cont. / 410 Nm cont.

high output power and torque with a compact design

- ▶ The electric motor converts electrical energy into mechanical power and provides purely electric propulsion.
- ▶ The electric motor transmits its torque directly to the transmission gear. By converting mechanical energy to electrical energy, the electric motor charges the vehicle's battery.
- ▶ The active parts of the electric motor 280 can be flexibly integrated into the electric rigid axle.